

# BEAM SHUTTLES

**PROVIDING ADVANCED**

**SOLUTIONS FOR**

**LASER DELIVERY SYSTEMS**

# LASER MECH

## BEAM SHUTTLES

Laser Mechanisms produces process shuttles for transferring a single input laser beam to one of two external workstations. Each shuttle is water cooled and will handle up to 10kW of CO<sub>2</sub> laser power.

The shuttles contain an adjustable copper mirror on a precision air-operated slide. The reflected beam may be adjusted by a tilt mechanism inside the shuttle. Access to the tilt mechanism does not require opening the shuttle enclosure.

All shuttles contain an adjustable beam bender on an air-driven slide. The reflected beam can be adjusted by means of tilting the mirror inside the housing.

Both types of shuttles feature shuttle mechanisms which are mounted to a single side plate of the housing, making removal easy for servicing. The beam path and tubes need not be disturbed.

Mirror movement is in the plane of the mirror so accuracy of the beam position is only a function of the slide way precision, not travel stops. The shuttles provide an accurate and reproducible beam position device and are available in several apertures.

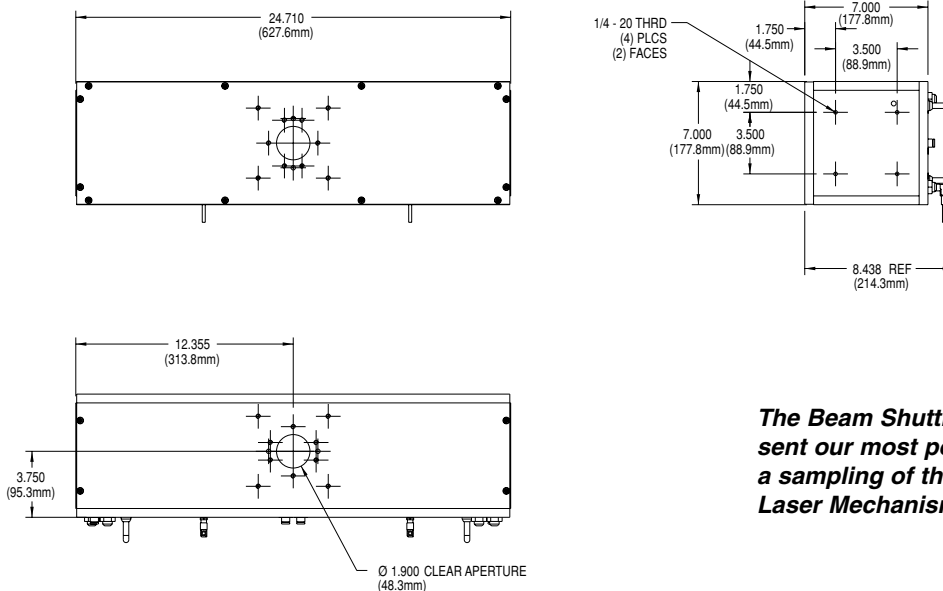
Interlock switches are provided to indicate shuttle position as well as optional manual operation lockouts, beam fuses and beam dumps for the open ports.

Pointing accuracy of all of the shuttles is better than 100 microradians total deviation.

**Model PLSHT0048** Fast Switching Shuttle; 49mm Aperture; 100 milliSec Shuttle Time @4BAR (60 psi); 49.5mm 45° Copper Mirror; Externally Adjustable Mirror

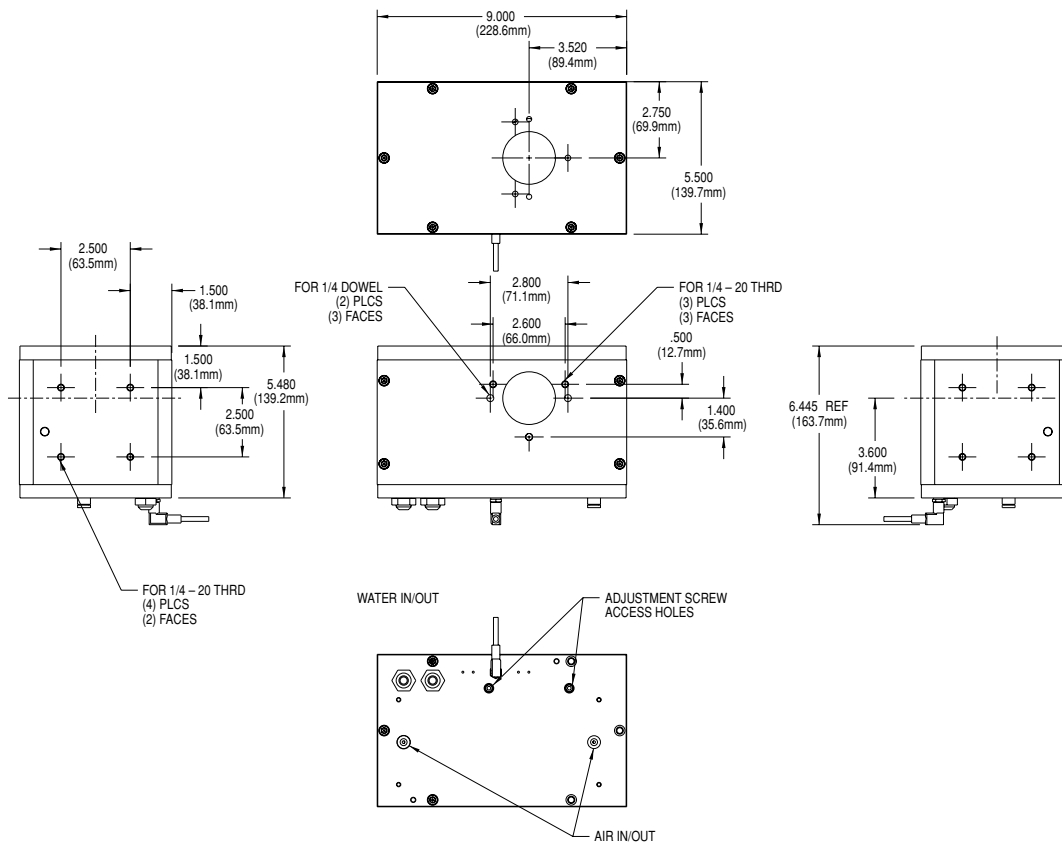
**Model PLSHT0054** Fast Switching Shuttle; 75mm Aperture; 150 milliSec Shuttle Time @4BAR (60 psi); 75mm 45° Copper Mirror; Externally Adjustable Mirror

**Model PLSHT0057** Fast Switching 3-Way Shuttle; 49mm Aperture; 150 milliSec Shuttle Time @4BAR (60 psi); 49.5mm 45° Copper Mirrors (2)

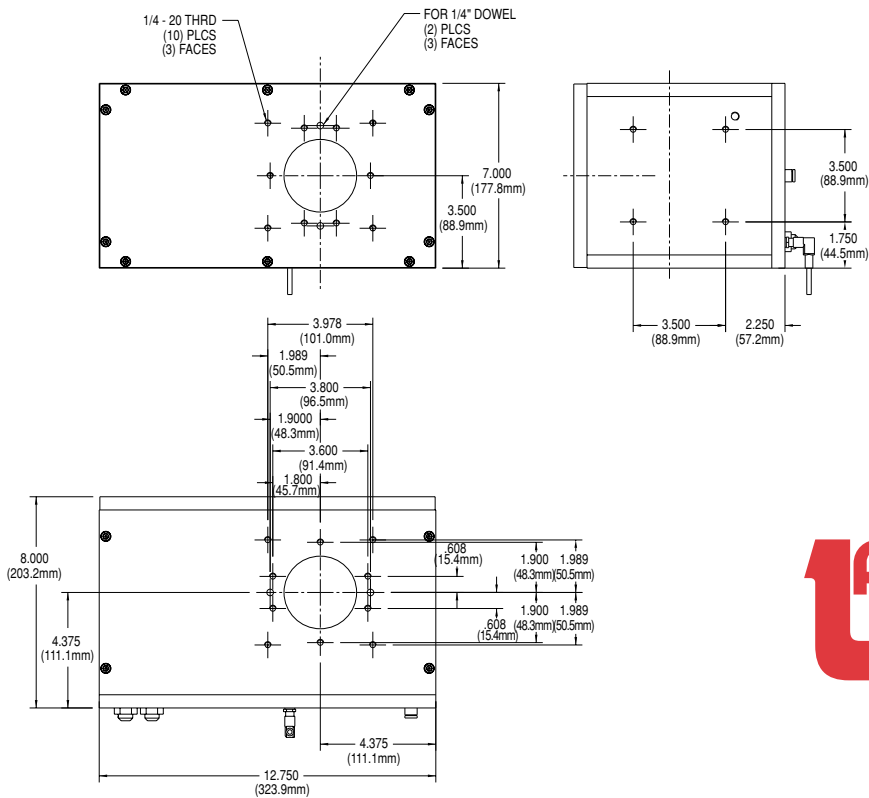


Model PLSHT0057

*The Beam Shuttles in this brochure represent our most popular models. They are just a sampling of the wide variety of models Laser Mechanisms currently offers*



Model PLSHT0048



Model PLSHT0054





Laser Mechanisms, Inc. specializes in Laser Beam Delivery Components to make the most of your laser.

**ALL WAVE LENGTHS • BEAM DIAMETERS TO SIX INCHES • CW POWER TO 25KW**

Let our staff of laser system engineers, with a total of over 250 years collective experience, supplement your in-house people. We will provide a design for a performance guaranteed beam delivery system for your special laser machine or new industrial laser based product. We are price effective and qualified to handle everything from the most basic to very sophisticated active sensing beam delivery systems.

**We Specialize In...**

- Complete system analysis
- CAD drawings for your quotations
- Engineering of customized delivery components
- Value line standard components
- Designs to suit OEM configurations
- Guaranteed performance delivery systems
- Large spare parts & optics inventory
- Fast delivery
- "Just In Time" OEM supplier arrangements



25325 Regency Drive • Novi, Michigan 48375 USA  
Phone: (248) 474-9480 • Fax: (248) 474-9277  
In Europe: Phone: +32(0)92 18 70 70 • Fax: +32(0)92 18 70 79  
Web: [www.lasermech.com](http://www.lasermech.com) • E-Mail: [info@lasermech.com](mailto:info@lasermech.com)